



## Dick Bond

**CIFAR Cosmology & Gravity Program: >1985, Bond Director 2002-17 => CIFAR Gravity & the Extreme Universe Program Sr Fellow 17-22** CITA: 6+ faculty, ~20 PDFs & Sr RAs + ~20 grad students; Bond: projects 4 grad students, 3 SrRAs, 2 (++) PDFs, 3SUGs+1VMSc +..

**Cosmic standard model SMC =  $\Lambda$ CDM,  $\Lambda$ =dark energy+tilt: what is U made of?**  
**Planck13-15-17 CMB, CvB, GW, dark matter, baryons, (dark energy/modGravity), CIB:**  
 $\rho_{dm}/\rho_b=5.43$   $\rho_{de}/\rho_{dm}=2.53$   $\Omega_m=0.32 \pm 0.009$ ,  $\Omega_\Lambda=0.68 \pm 0.009$  =>

**BSMc Beyond the SMC** eg  $\Omega_\Lambda(t,x)$ , neutrino properties, inflation anomalies

**How Structure in the Universe Arose?: fluctuation generation in curvature from an early inflaton: reconstruct  $\ln a(x,t) \sim$  phonons, isocurvature, r Gravity Waves**

**HEAT** (coherence + quantum noise => incoherence via entropy generation) via nonlinear lattice simulations of multiple scalar fields at the end of inflation <=> dynamical systems

=> **CMB/LSS Anomalies from EarlyU intermittent non-Gaussianity cf. perturbative non-Gaussianity, correlated & uncorrelated => CITA in CMB + LSS large surveys**

**CMBology** precision cosmic parameters **Planck 2013-15-17** intensity + polarization + **ACTpol + BKP + SPT => Spider, Advanced ACTpol CCATp => Simons Obs => CMB Stage 4, ... &**

**LSSology** CHIME, COMAP, Euclid ... & cross correlations: **CMBxLSS = webXweb**

**morphs** into the nonlinear **Cosmic Web: Mocking Heaven** clusters SZ, filaments, voids; galaxies Mass-peak-patches, N-body, gas: Lens, tSZ, kSZ, CIB, CO, HI (21cm, H $\alpha$ , Ly $\alpha$ ) optical

**Line Intensity Mapping**

**constrained patch stacks**

**fate (dynamical, coupled?) dark energy**

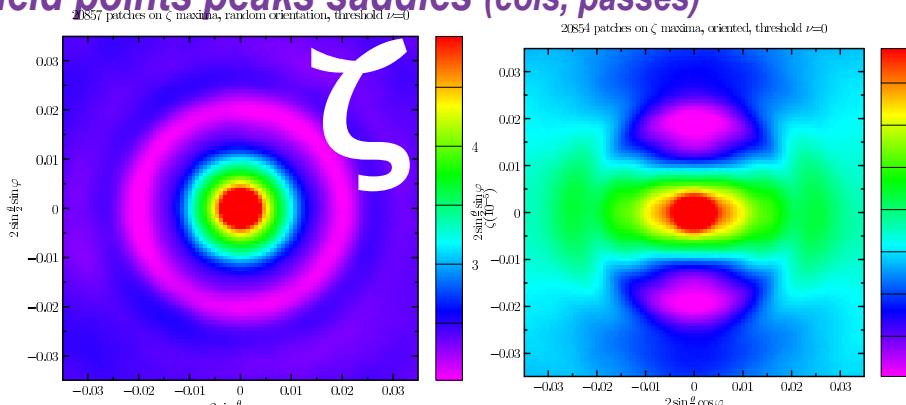
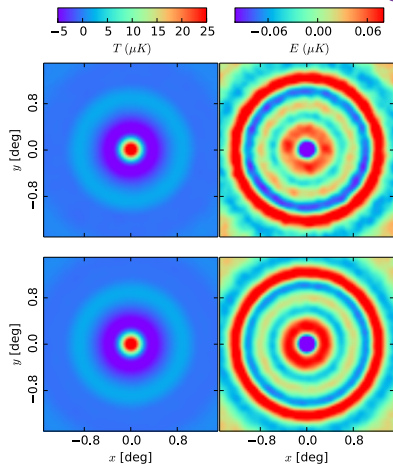
# Stacking @ CITA - oriented asymmetric on extrema & other points

Topography of the CMB-web,  $\zeta$ -web, IQU/ E B, ISM-web,  $\gamma$ -web, LIM/LAM web

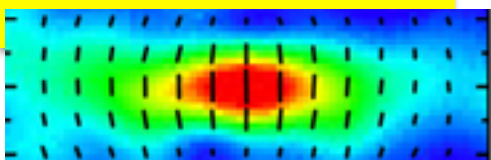
oriented/symmetry-broken stacking on field points peaks saddles (cols, passes)

ACTPol stack  
 $\langle T, E, B | T\text{-field} \rangle$

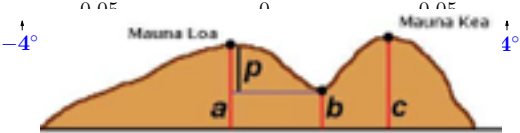
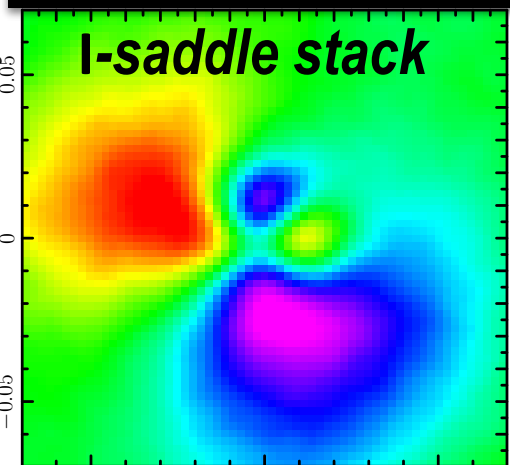
B+Frolov+Huang 17



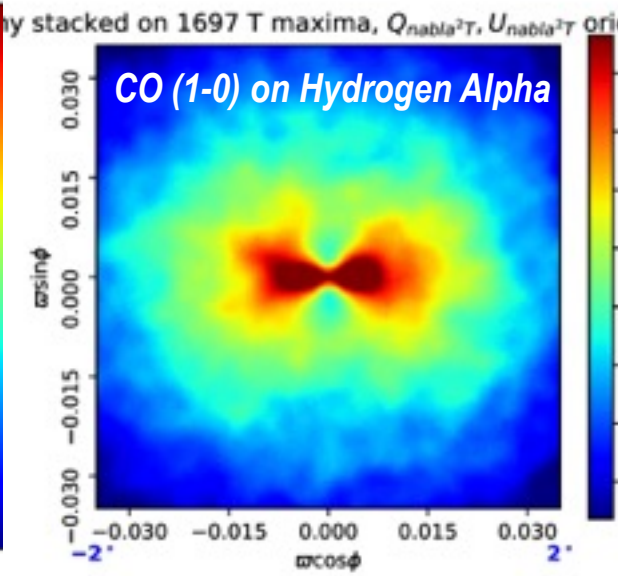
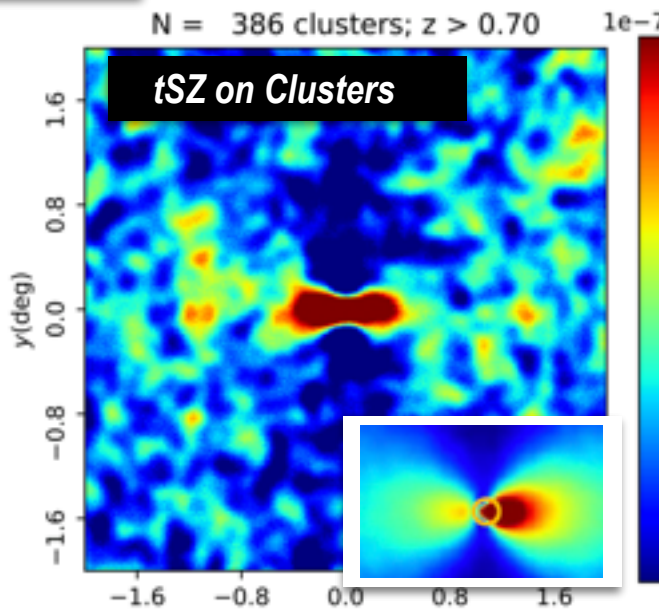
$\langle Qr | \text{oriented } l\text{-pk} \rangle$



Planck 353 GHz stacked dust



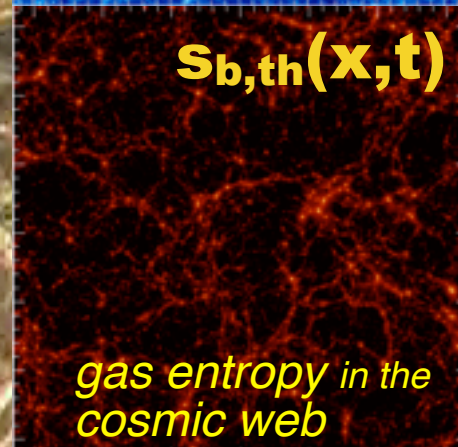
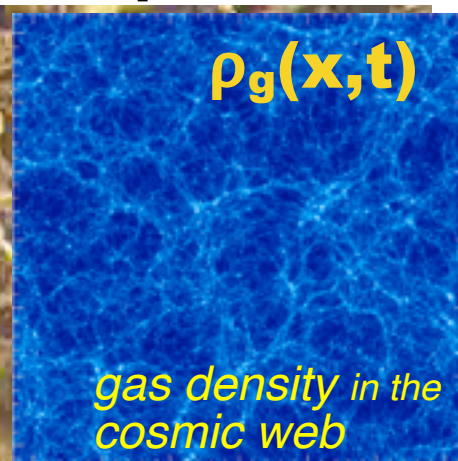
earlyU SuperWeb map Planck2015 XVII  
 stacked  $\zeta$ -map |  $\zeta\text{-pk } TQU \rangle$  BFH17





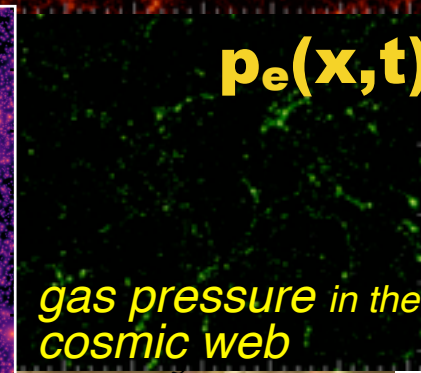
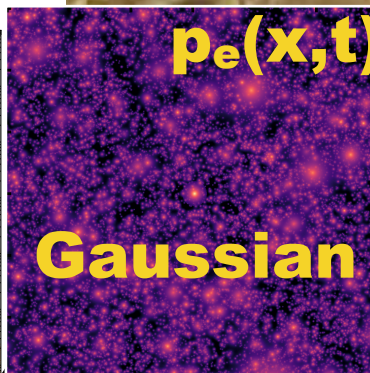
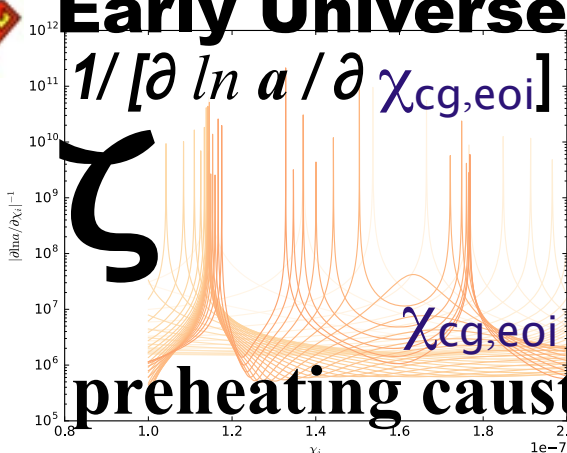
# caustics are ubiquitous: LSS/cosmic web & preheating

Andrei Frolov movie in Banff B2FH



$\zeta_{dm}$   cf.  $\int \mathbf{K} S_{dm}$

**Early Universe**





# Mocking Heaven with PeakPatches++



*Dick Bond @ CITA Jamboree 17*

*Planck, AdvACT, SO, CMB-S4, CCATp, EUCLID, LSST, CHIME, HIRAX, COMAP, ...SKA*  
*Line Intensity Mapping and Line Absorption Mapping fLIMfLAM*

*CITA mini-industry: Marcelo Alvarez, Dick Bond, George Stein & Battaglia, Codis, van Engelen & FIRE: Lakhani + Murray + Hopkins + Berger & Connor Bevington, Bruno Régaldo-Saint Blancard, Ronan Kerr, Louis Pham*

*need End to End mocks: BSM, nonG, DE/modG, Mnu, ...*  
*need all signals to be correlated, 1, 2, 3, .. Npt*  
*need speed to build ensembles & explore BSM*

**CIB**

**tSZ**

**HI**  
**CHIME**

**weak**  
**lens**

**Optical**

**kSZ**

*Planck 2015 XII: Full Focal Plane Sims: FFP8 ensemble of 10K EndtoEnd mission realizations in 1M maps. instrument noise + CMB + PSkyModel + .. (25M NERSC CPU hrs)*