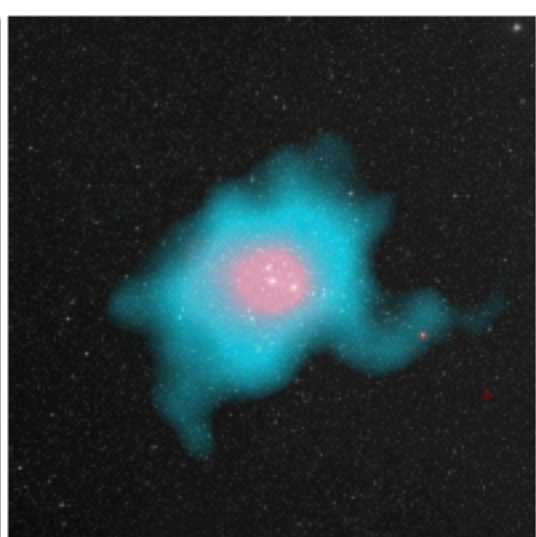
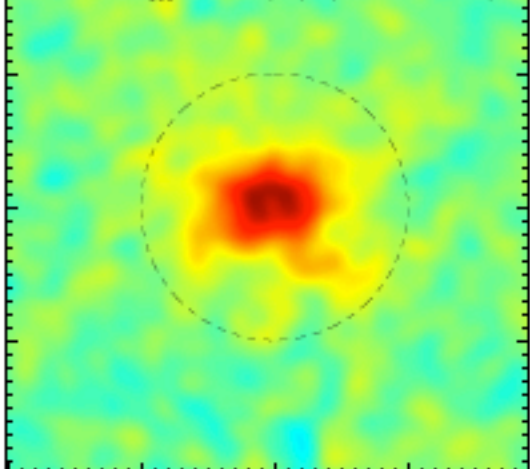
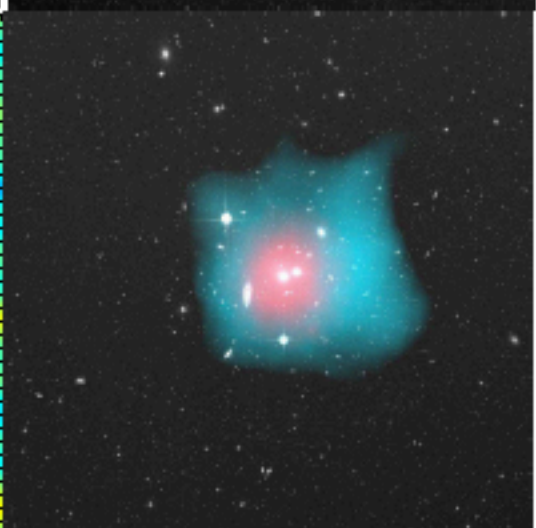
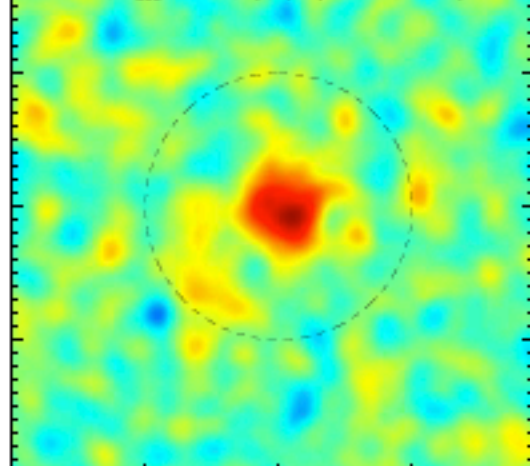


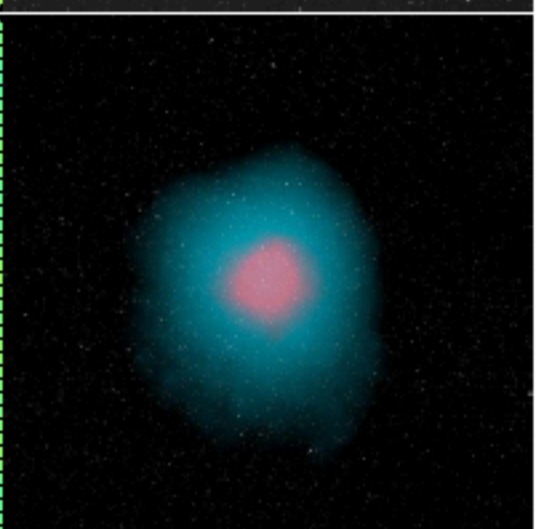
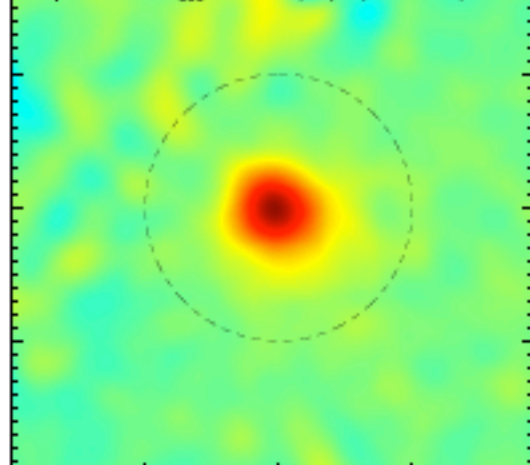
Perseus, $\theta_{500}=58.9'$, $(l,b)=(150.5^\circ,-13.2^\circ)$



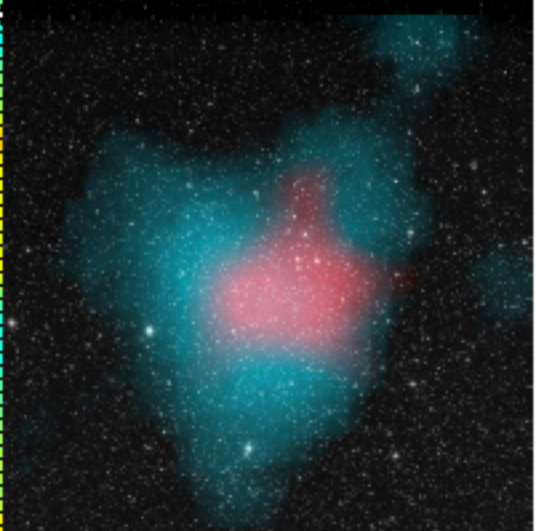
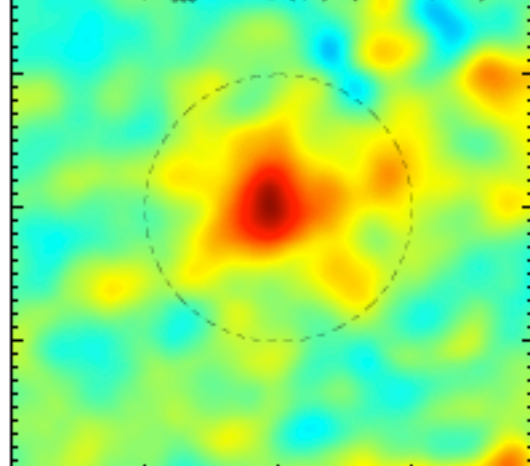
A1060, $\theta_{500}=45.3'$, $(l,b)=(269.5^\circ,26.4^\circ)$



Ophiuchus, $\theta_{500}=36.1'$, $(l,b)=(0.5^\circ,9.2^\circ)$



3C_129.1, $\theta_{500}=32.4'$, $(l,b)=(160.5^\circ,0.2^\circ)$



Virgo, $\theta_{500}=168.1'$, $(l,b)=(283.8^\circ,74.4^\circ)$

